



## Arctic EDGE Router



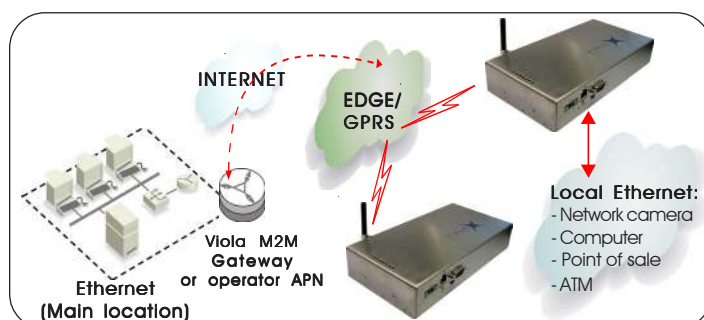
**Connect Ethernet Devices to High Speed EDGE Network**

## Expand Your Ethernet Wirelessly

Expand your Ethernet over EDGE network and integrate your remote locations and mobile vehicles as a part of your local network with Arctic EDGE Router.

No distance limitations! Global systems are possible with the most common wireless network (GSM/GPRS/EDGE) in the world

Secure and two-way communication (static IP addresses) is provided with Viola M2M Gateway (operator independent) or with operator APN.



### Key Features

- Industrial grade EDGE router
- Expands Ethernet devices over EDGE network
- Easy and quick to install
- Firewall and VPN for secure communication
- 10/100 Base-T Ethernet connection
- Mobile operator independent static IP addressing with Viola M2M Gateway
- If EDGE is not available GPRS is used automatically
- **Quad-Band: Can be used in every GSM network worldwide. (Europe, Asia, USA)**

### Application Examples

- Connect Ethernet devices to EDGE network
- Provide Internet access to locations without fixed connections and to mobile vehicles
- Surveillance systems
- Trucks, fork lifts, cranes
- Security systems
- Credit card verifications, POS, ATM

## Hardware

### Processor Environment

32 bit RISC processor  
8 MB FLASH memory  
32 MB SDRAM memory

### Power

12 – 32 VDC nominal input voltage  
1 – 5 W power consumption  
Resettable fuse and ESD protection

### Other

Temperature sensor, real time clock

### Environment

Temperature ranges:  
–30 to +70 °C (normal operation)  
–45 to +85 °C (storage)  
Humidity 5 to 85 % RH

### Approvals

CE

## Network Interfaces

### Ethernet

10/100 Base-T. Shielded RJ-45  
1,5 kV isolation transformer  
Ethernet IEEE 802-3, 802-2

### EDGE/GPRS/GSM

Quad-Band GSM 850/900/1800/1900 MHz

### EDGE

EDGE class 10: max 236.8 kbps (downlink)  
Mobile station class B  
Modulation and coding scheme MCS 1-9

### GPRS

GPRS class 12  
Multislot up+down 4+4, total max.5.  
Mobile station class B  
PBCCH support  
Coding schemes CS 1-4

### CSD (GSM data)

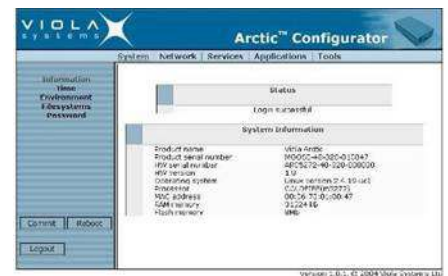
Up to 14.4 kbps  
V.110  
Non-transparent mode  
USSD support

## Serial Console

RS-232, 19200 bps, 8 data bits,  
1 stop bit, no parity (8N1)

## Configuration and Management

The Arctic EDGE Router is configured using a www browser. A conventional console interface is also provided. The software of Arctic EDGE Router can be updated over the network.



## Software

### Network Protocols

PPP, IP, ICMP, UDP, TCP, ARP,  
DNS, DHCP, FTP, TFTP,  
HTTP, POP3, SMTP

### Tunneling (VPN)

SSHv2 server and client  
SSHv1 server and client

### Management

WWW, SSH, Telnet and console  
FTP, TFTP and HTTP software update  
GSM Data: Dial-In (PPP)  
SMS messages

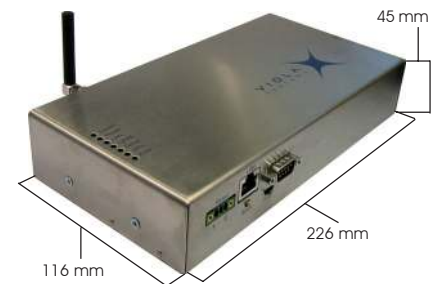
### Routing Related

Static routing, proxy ARP, port forwarding,  
IP masquerading/NAT, firewall

### EDGE/GPRS

Automatic, manual or constant EDGE/  
GPRS connection management

## Dimensions



## Ordering Information

Arctic EDGE Router - 2280

### Options

Accessory kit  
Rooflex antenna with 2,5 m cable  
Power supply 100/240VAC-12VDC  
DIN rail mounting kit  
Magnetic antenna with 2,5 m cable

### Ordering Address

Viola Systems Ltd.  
Lemminkäisenkatu 14 - 18 B  
FIN-20520 Turku, Finland  
Phone + 358 (0)20 1226 226  
Fax + 358 (0)20 1226 220

sales@violasystems.com

[www.violasystems.com](http://www.violasystems.com)

All rights reserved



Lemminkäisenkatu 14 - 18 B, FIN-20520 Turku, Finland  
Phone + 358 (0)20 1226 226, Fax + 358 (0)20 1226 220, [www.violasystems.com](http://www.violasystems.com)