



Viola M2M Gateway Enterprise Edition



Provide Static
IP addresses and Secure
Communication to Your Arctic Devices

Ethernet Expansion Solution for Large Systems

Expand your Ethernet over wireless (GPRS/EDGE) networks and integrate your remote locations and mobile vehicles as part of your local network with Viola M2M Gateway and Viola's Arctic products.

Viola M2M Gateway (Enterprise Edition) is specially designed for large systems in terms of hardware reliability by providing dual power supply and hard drives.

No distance limitations! Global systems are possible if GSM/GPRS network is available.

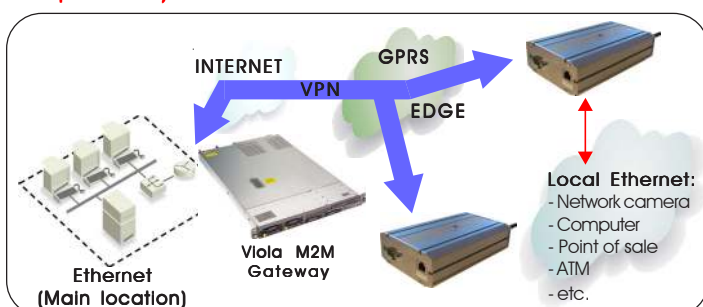
Secure and two-way communication (static IP addresses) provided with Viola M2M Gateway (operator independent).

Key Features

- For large systems supporting more than thousands of Arctic units
- Dual power supply and hard drives for redundant operation
- Expands Ethernet over wireless (GPRS/EDGE) network
- Mobile operator independent static IP addressing for connected Arctic GPRS devices enabling two-way communication
- Easy and quick to install and configure
- VPN for secure communication
- Built-in Firewall
- OpenVPN for remote management connection

Application Examples

- Provide Internet access to locations without fixed connections and mobile vehicles
- Electricity networks (Feeder Stations, Substations)
- Road weather stations
- Surveillance systems
- Trucks, fork lifts, cranes
- Security systems
- Credit card verifications, POS, ATM



Hardware

Processor Environment

2 GHz Quad-Core Xeon

Memory

2 Gb RAM
2x72 Gbytes SAS hot swap

Power

Dual power supply (100-240 VAC)

Casing

Metal
19" Rack Mountable (1U)

Operating Environment

Operating temperature 0 to +45 °C
Storage temperature -20 to +45 °C
Humidity 10% to 90% RH non-cond.

Network Connection

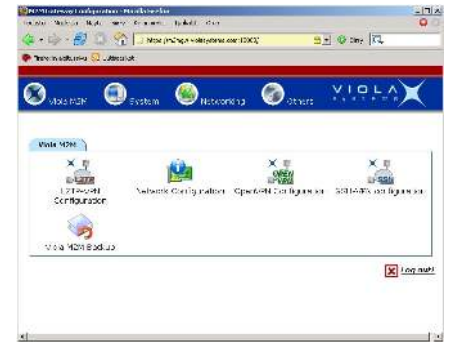
2 x Ethernet RJ-45 (10/100/1000 Base-T)

Approvals

CE, FCC

Configuration and Management

Viola M2M Gateway is configured and managed by secure https-connection. You can configure and view the status of the remote Viola Arctics and configure the VPN connection between Viola M2M Gateway and Viola Arctic device.



Software

Viola M2M Gateway includes a special software which enables VPN connection between company network and remote Arctic devices providing same time static IP addresses to Arctic devices. It can also be used to control and monitor Arctic devices in local or remote networks.

Dimensions



Network Requirements and Warranty

Networks Requirements

- Requires public and static IP address (provided by ISP).
- The device can be installed behind company firewall or in DMZ.

Warranty

3 years limited warranty.

Ordering Information

Viola M2M Gateway Enterprise Edition - 2505

Ordering Address

Viola Systems Ltd.
Lemminkäisenkatu 14 - 18 B
FIN-20520 Turku, Finland
Phone + 358 (0)20 1226 226
Fax + 358 (0)20 1226 220

sales@violasystems.com

www.violasystems.com

All rights reserved



Lemminkäisenkatu 14 - 18 B, FIN-20520 Turku, Finland
Phone + 358 (0)20 1226 226, Fax + 358 (0)20 1226 220, www.violasystems.com

March, 2008