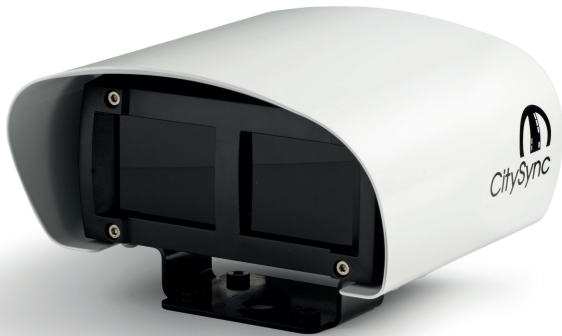


ANPR Camera For Parking Systems



KEY FEATURES

- ▶ HD ANPR camera for 24/7 plate recognition
- ▶ Various illumination options available
- ▶ Captures plates from 3–15 metres
- ▶ IP connectivity

The CitySync 30 camera is optimised for short to mid-ranged ANPR for the following applications:

- ▶ Airports security and parking
- ▶ Shopping Centres
- ▶ Barrier and access control systems

High Quality Imaging

The CitySync 30 camera provides HD video for high-accuracy ANPR for parking and access control systems.

The 2MP sensor provides detailed images of passing licence plates. The high resolution enables capture of the most challenging plates including those with half-height and stacked characters.

The CitySync 30 camera is available with multiple illumination options including 850 nm and 760 nm infra-red and white-light. This flexibility allows clear, crisp, licence plate images to be produced in 24-hour conditions.

Jet Recognition Engine

The camera is complimented by the Jet recognition engine which is one of the fastest and most accurate in the World. The engine is supported fulltime by our in-house development team.

Jet Parking Software

When combined with the Jet Parking software, users are able to experience a complete parking management and access control system.

The system allows:

- ▶ Car Park Counting
- ▶ Automated access / barrier control
- ▶ LED sign integration
- ▶ Alarm management
- ▶ Ticketing integration

| PART NO. INFORMATION | DESCRIPTION |
|----------------------|---|
| CS-30-S-850 | 3–6 m range (IR) |
| CS-30-M-850 | 6–10 m range (IR) |
| CS-30-L-850 | 10–15 m range (IR) |
| CS-30-S-W | 3–6 m range (White Light) |
| CS-30-M-W | 6–10 m range (White Light) |
| CS-30V-S-850 | 3–6 m range Vertical for bollard (IR) |
| CS-30V-M-850 | 6–10 m range Vertical for bollard (IR) |

TECHNICAL INFORMATION

| | |
|----------------------------|---|
| Input Power | 24V DC |
| Power Consumption | <18 W |
| ANPR Range Options | From 3m to 15m |
| ANPR Camera | 2MP 1/3" CMOS sensor MJPEG Video Streams Frame Rate: 25 fps maximum |
| Illuminators | Standard 850 nm IR, with 760 nm and white light options Illumination angle pre-focused and aligned to suit detection range |
| Shutter Speed | 1/25 th–1/8,000 th second |
| Environmental | -30° to +55°C – operating temperature 0%–95% Relative Humidity IP66 |
| Dimensions and Mass | With sunshield 95 x 195 x 255 mm (H x W x D) Without sunshield 75 x 155 x 185 mm (H x W x D) 2.2 kg |
| Brackets | Various optional mounts available |